

Module 1

Installing GeoServer

This module walks through the GeoServer installation process. The reader will learn how to set up the necessary tools for a GeoServer environment.

In this module you will:



- Install a Java Development Kit (JDK).
- Install GeoServer.
- Learn how to start a GeoServer instance.

Before you start:


















- Ensure that the *OpenGEO* USB drive is inserted.

Section 1: Installing Java

1. Double-click on the USB drive in My Computer to access the OpenGeo welcome page. (You can use the welcome screen to install all software in this workshop, as will be assumed here, or you can navigate to the “software” directory.)

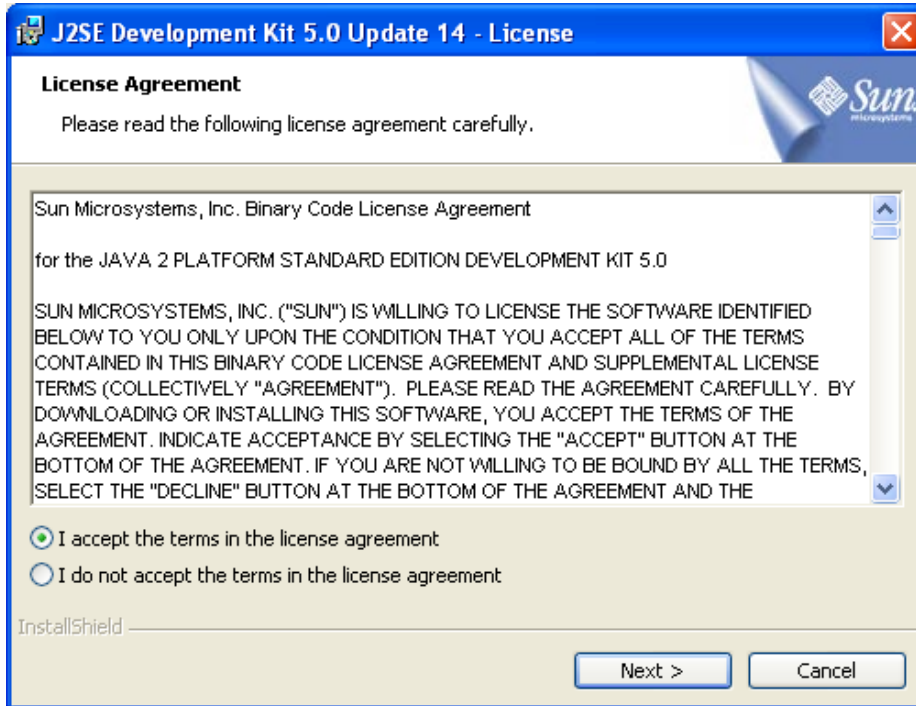
An open geo-stack offers a flexible and feature-filled solution for your web mapping needs. Store your data with PostGIS, set up GeoServer to publish it, and develop an OpenLayers-based client for the browser. This tutorial will focus on these three core components of an open source geo-stack and will also cover architectures that cross the proprietary/open source divide.

Documentation	Applications
MODULE 1 Installation  	 Java install
MODULE 2 Basics  	 GeoServer install
MODULE 3 PostGIS  	 Postgres install
MODULE 4 BaseMap  	 PostGIS install
MODULE 5 OpenLayers  	 Google Earth install
MODULE 6 Google Earth  	

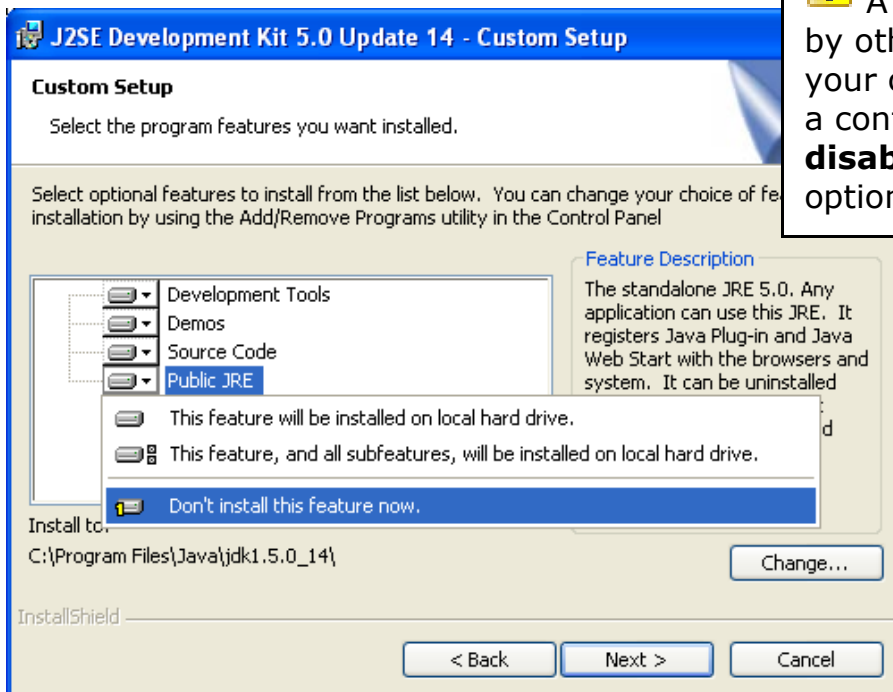
2. Run the *Java Development Kit* (JDK) installer by double-clicking on the “Java install” link (or, software\jdk-1_5_0_14-windows-i586-p.exe).


 Running GeoServer requires a Java Development Kit (**JDK**) not just a Java Runtime Environment (**JRE**).

3. Accept the *License Agreement* and click *Next*.



4. On the *Custom Setup* screen disable the *Public JRE* feature and click *Next*.

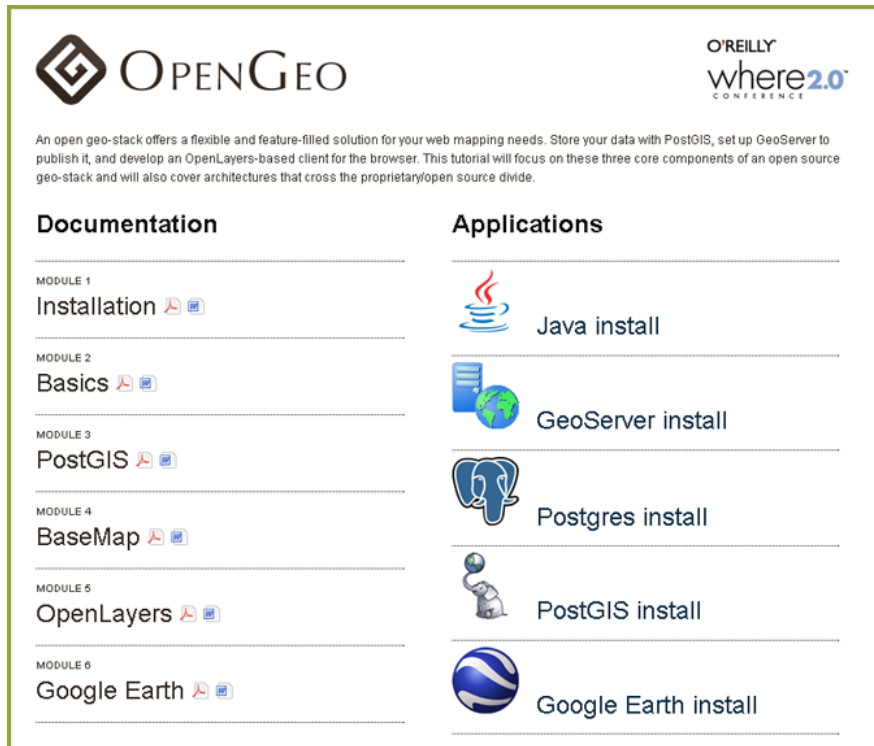


 A JRE is often installed by other applications on your computer. To prevent a conflict you should **disable** the Public JRE option.

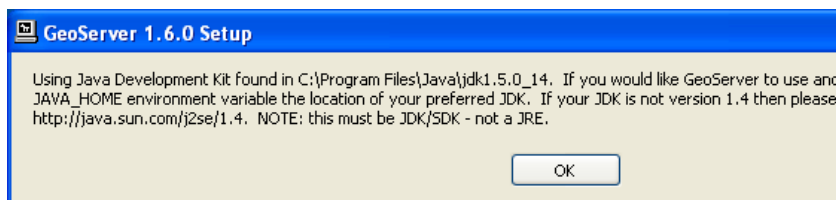
5. Exit the installer by clicking *Finish*.


Section 2: Installing GeoServer

1. Run the GeoServer installer by double-clicking on the “Geoserver install” link on the welcome page (or software\geoserver-1.6.3-where.exe). Click *Next* on the installer *Welcome* screen.

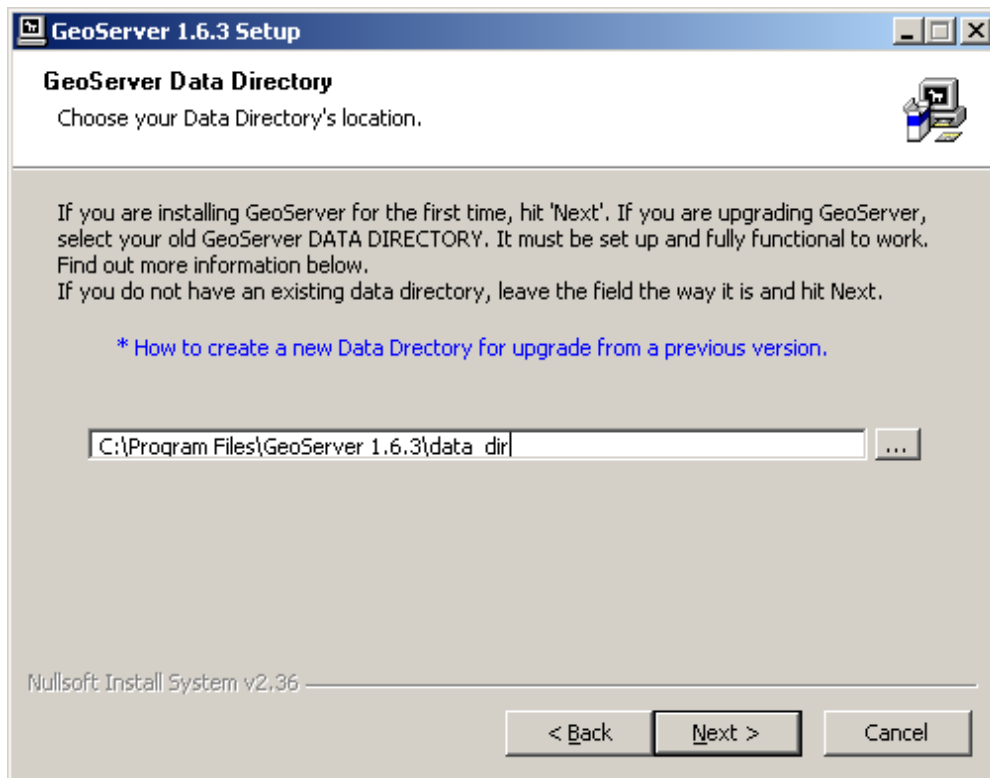
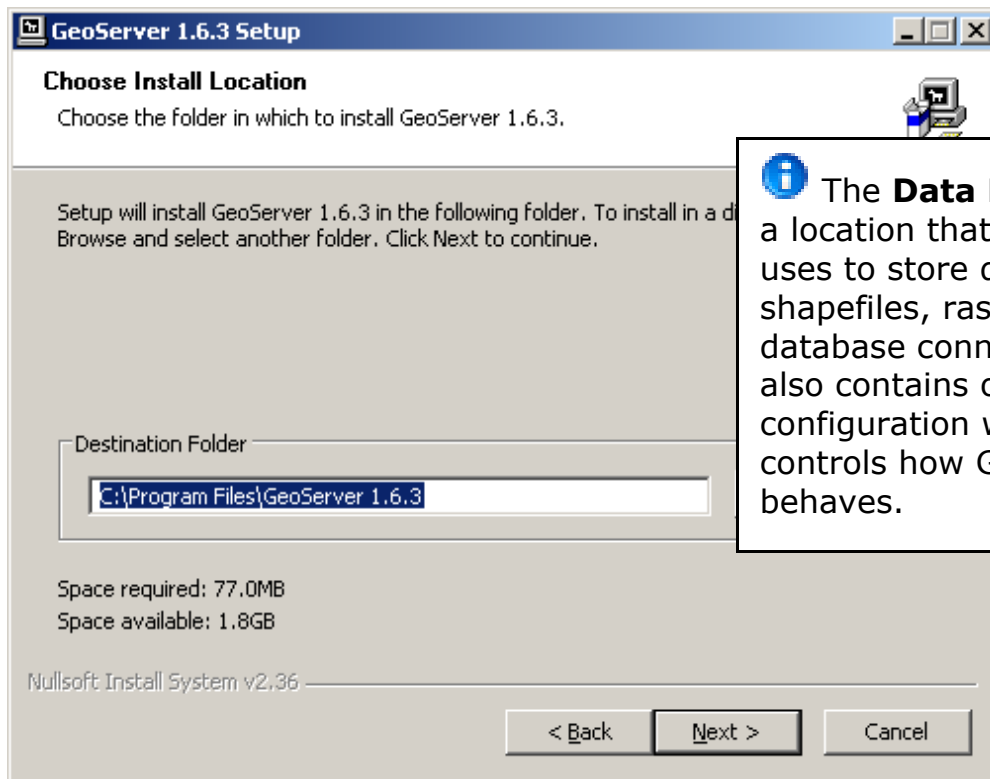


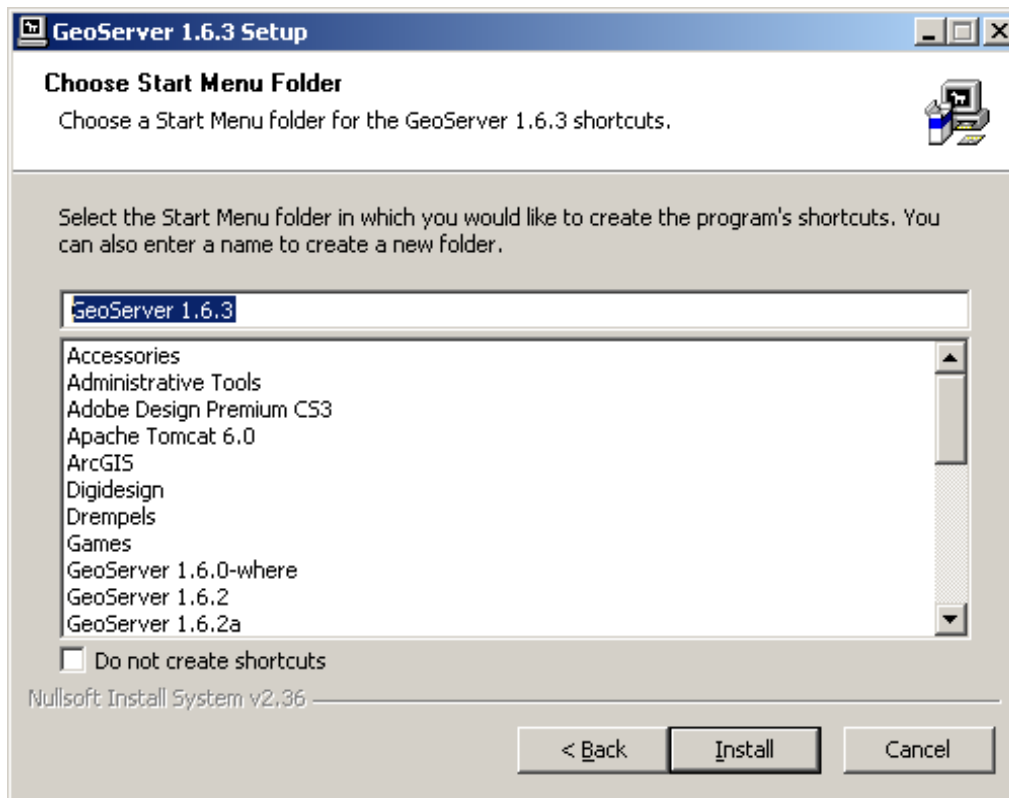
Ensure the *JDK* installed in the previous section is detected and click *OK*.



 This location should match the location of the JDK we installed in the previous section.

2. Accept the *License Agreement* and continue to work through the rest of the installer accepting the default values.






3. Exit the installer by clicking *Finish*.


Section 3: Running GeoServer

1. From the *Start Menu* navigate to *Programs*→*GeoServer 1.6.3* and select *Start GeoServer*.

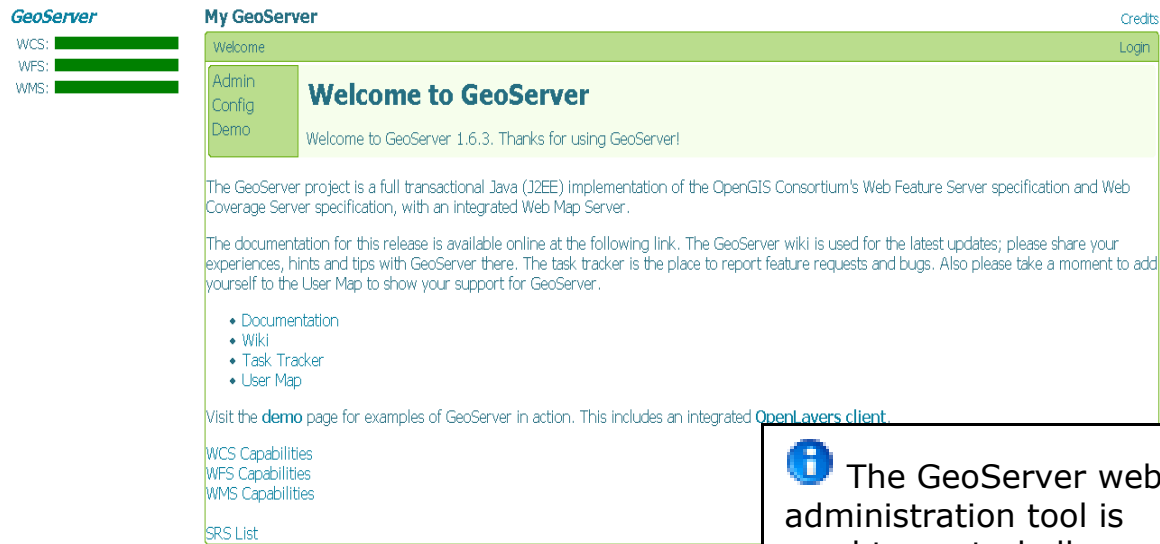
```


12 Feb 17:58:19 INFO [geoserver.global] - Loading feature type 'sf
chsites' <layer 5/14>
12 Feb 17:58:19 INFO [geoserver.global] - Loading feature type 'sf
sites' <layer 6/14>
12 Feb 17:58:19 INFO [geoserver.global] - Loading feature type 'sf
restricted' <layer 7/14>
12 Feb 17:58:19 INFO [geoserver.global] - Loading feature type 'sf
<layer 8/14>
12 Feb 17:58:19 INFO [geoserver.global] - Loading feature type 'sf
ams' <layer 9/14>
12 Feb 17:58:19 INFO [geoserver.global] - Loading feature type 'states_shapefile
::states' <layer 10/14>
12 Feb 17:58:19 INFO [geoserver.global] - Loading feature type 'tasmania_cities:
::tasmania_cities' <layer 11/14>
12 Feb 17:58:19 INFO [geoserver.global] - Loading feature type 'tasmania_roads::
:tasmania_roads' <layer 12/14>
12 Feb 17:58:19 INFO [geoserver.global] - Loading feature type 'tas
boundaries::tasmania_state_boundaries' <layer 13/14>
12 Feb 17:58:19 INFO [geoserver.global] - Loading feature type 'tas
odies::tasmania_water_bodies' <layer 14/14>
45203 [main] INFO /geoserver - Initializing WebApplicationContext f
ionServlet 'action', module ''
45531 [main] INFO org.mortbay.log - Started SelectChannelConnector
0
    
```

 Do **NOT** close the command prompt that is opened GeoServer starts.

 The command prompt is useful for monitoring GeoServer behavior and capturing error logs for bug reports.

2. Open a *web browser* and navigate to the GeoServer *Welcome Page* at <http://localhost:8080/geoserver/>.



 The GeoServer web administration tool is used to control all aspects of GeoServer. From this interface a user can add new data, set styling information, and more.